

# Fara mitts & beanie

## Inspired by Fair Isle jacquard

This winter unisex set is freely inspired by patterns used in the north of Scotland, hence its name: Fara (Fair Isle in Scottish Gaelic). Models include full written explanations and diagrams, depending on your preferred method. The hat is in size 57/58 and the mittens in size 8 approximately.



### Material :

1 ball Edition 3.0 Schoppel Wolle

2 balls Life Style Schoppel Wolle, [kit available on this page of the shop :](#)

[https://lesaignillesdecamille.com/Kit-Tricot-Ensemble-Fara-Bonnet-et-Mitaines-p-1277-c-96\\_134.html#fp](https://lesaignillesdecamille.com/Kit-Tricot-Ensemble-Fara-Bonnet-et-Mitaines-p-1277-c-96_134.html#fp)

Circular needles 3mm or set of double pointed needles 3mm. A remnant of contrasting thread equivalent in size to those used in this pattern.

Yarn or tapestry needle, scissors, 1 cardboard holder to make the tassel of the hat, tape measure, stitch markers.

### Points and abbreviations :

For the use of the different colors, the following abbreviations will be added to the knitting point:

S : solid yarn (Life Style)

C : yarn in gradient colors (Edition 3.0)

k : knit

p : purl

K2tog : knit 2 stitches together

SKP : slip knit pass over

m1 : make one, [see there](#) :

<http://www.tricotepastout.com/archives/2013/02/09/26371255.html>

\*... \* Knit the pattern between \* and \* as many times as necessary to finish the round or go to the last indication on the round.

(...) x ... repeat the pattern in parentheses as many times as indicated after the "x".

R : round

Gauge : stockinette 10cm/10cm needles 3mm: 32rounds/28stitches.

*Pattern Camille Delahaie- les aiguilles de camille.com*

*Any commercial use of this pattern and its achievements are prohibited,  
unless prior written consent of the author.*

## Beanie :

Written pattern : with Edition3.0 yarn, cast on 120 stitches loosely on circular needles or on your double pointed needles (in this case distribute your stitches evenly, 30/each), put a marker to indicate the start of the round and start knitting in 2/2 rib on next round 14 times: \* kC2,pC2 \*. (rounds 1 to 14 on the diagram)

Then in solid Life style :

R15, 19 and 21 : \*kS\*

R16, 18 and 20 : \*pS\*

R17 : \*kS6, m1S\* (140 stitches at the end of this round).

*If you wish, you can put a stitch marker every 14 stitches, they will mark out the patterns and then the places where you have to make the decreases, which will make it easier to move forward and control your work.*

Start patterns :

R22 : \*kS1, kC1\*

R23, 27 and 28 : \*kS\*

R24 : kS2, kC1, \*kS3, kC1\*, finish with kS1.

R25 : \*kS1, kC3\*

R26 : \*kC\*

R29 : \*kC1, kS3, kC3, kS3, kC1, kS3\*

R30 : \*kC3, kS2, kC1, kS2, kC3, kS3\*

R31 : \*kS1, kC3, kS3, kC3, kS2, kC1, kS1\*

R32 : \*kS2, kC2, kS3, kC2, kS2, kC3\*

R33 : \*kS3, kC2, kS1, kC2, kS3, kC3\*

R34 : \*kC2, kS2, kC3, kS2, kC2, kS3\*

R35 : \*kC3, kS1, kC1, kS1, kC1, kS1, kC3, kS1, kC1, kS1\*

R36 : \*kC2, kS2, kC3, kS2, kC2, kS3\*

R37 : \*kS3, kC2, kS1, kC2, kS3, kC3\*

R38 : \*kS2, kC2, kS3, kC2, kS2, kC3\*

R39 : \*kS1, kC3, kS3, kC3, kS2, kC1, kS1 \*

R40 : \*kC3, kS2, \*kC1, kS2, kC3, kS3 \*

R41 : \*kC1, kS3, kC3, kS3, kC1, kS3\*

R42 and 43 : \*kS\*

R44 : \*kC\*

R45 : \*kS1, kC3\*

R46 : kS2, kC1, \*kS3, kC1\*, finish with kS1.

R47, 49, 51, 53, 55, 57, 59, 61, 63, 65, 67, 69, 71, 73, 75 and 77: \*kS\*

R48 and 52 : \*kS1, kC1\*

R50, 54, 58 and 62 : \*kC1, kS1\*

R56 : \*(kS1, kC1)x6, 1SKPS, 1K2togC, (kS1, kC1)x6\*

R60 : \*(kS1, kC1)x5, kS1, 1SKPC, 1K2togS, kC1, (kS1, kC1)x5\*

R64 : \*(kS1, kC1)x5, 1SKPS, 1K2togC, \*(kS1, 1mdC)x5\*

R66 :\*(kC1, kS1)x4, kC1, 1SKPS, K2togC, kS1, (kC1, kS1)x4\*  
 R68 :\*(kS1, kC1)x4, 1SKPS, 1K2togC, (kS1, kC1)x4\*  
 R70 : \*(kC1, kS1)x3, kC1, 1SKPS, 1K2togC, kS1, (kC1,kS1)x3\*  
 R72 : \*(kS1, kC1)x3, 1SKPS, 1K2togC, (kS1, kC1)x3\*  
 R74 : \*(kC1, kS1)x2, kC1, 1SKPS, 1K2togC, kS1, (kC1,kS1)x2\*  
 R76 : \*(kS1, kC1)x2, 1SKPS, 1K2togC, (kS1, kC1)x2\*  
 R78 : \*2K2togC, kC2, 2K2togC\*  
 R79 and 81: \*kC\*  
 R80 : \*1K2togC, kC2, 1K2togC\*

After round 81 there are 20 stitches left. Take a yarn needle, thread Edition 3.0 yarn through the remaining stitches, tighten, repeat the operation and bring in the thread into the top of the hat. Bring in the other threads and cut them short.

The hat is sufficient on its own, but you can make a personalized finish, with one or more pompoms, for my part I chose to make an Edition3.0 wool tassel and fix it at the top of the hat with a small braid , which gives it strength. You can also put charms or whatever you like to make your work unique.

### Mitts :

#### Written pattern :

Cast on 56 stitches on circular needle or 4 needles (evenly distribute 14 stitches per needle) with Life Style solid color, form a circle, put on a stitch marker and start knitting.

R1, 3, 5, 10 and 12 : \*kS\*  
 R2, 4, 6 and 11 : \*pS\*  
 R7, 8 and 9 : \*kC\*  
 R13 : \*kS1, kC1\*  
 R14, 18 and 19 : \*kS\*  
 R15 :kS2, kC1, \*kS3, kC1\*, finish with kS1.  
 R16 : \*kS1, kC3\*  
 R17 : \*kC\*  
 R20 : \*kC1, kS3, kC3, kS3, kC1, kS3\*  
 R21 : \*kC3, kS2, 1mdC,kS2, kC3, kS3\*  
 R22 : \*kS1, kC3, kS3, kC3, kS2, kC1, kS1\*  
 R23 : \*kS2, kC2, kS3, kC2, kS2, kC3\*  
 R24 : \*kS3, kC2, kS1, kC2, kS3, kC3\*  
 R25 : \*kC2, kS2, kC3, kS2, kC2, kS3\*  
 R26 : \*kC3, kS1, kC1,kS1, kC1, kS1, kC3, kS1, kC1,kS1\*  
 R27 : \*kC2, kS2, kC3,kS2, kC2, kS3\*  
 R28 : \*kS3,kC2, kS1, kC2, kS3, kC3\*  
 R29 : \*kS2, kC2, kS3, kC2, kS2,kC3\*  
 R30 : \*kS1, kC3, kS3, kC3, kS2, kC1, kS1\*

R31 : \*kC3, kS2, kC1, kS2, kC3, kS3\*

R32 : \*kC1, kS3, kC3, kS3, kC1, kS3\*

R33 and 34 : \*kS\*

R35 : \*kC\*

R36 : \*kS1, kC3\*

R37 : kS2, kC1, \*kS3, kC1\*, finish with kS1.

R38,40, 42, 44, 45, 48, 50, 51, 53, 54, 56, 57, 59, 60, 62, 63, 65, 66, 68,70 and 72 : \*kS\*

R39 : \*kS1, kC1\*

R41 : \*pS\*

R43, 49, 55, 61 and 67 : \*kS3, kC1\*

R46, 52,58 and 64 : \*kS1, kC1, kS2\*

R47 : kS1, k11 in the contrasting thread provided for this purpose then finish the round in k . the 11 stitches will be used to knit the thumb .

R69, 71 and 73 : \*pS\*

At the end of round 73 bind off all stitches with solid Life Style by knitting the stitches.

Switch to thumb:

Pick up 22 stitches with the contrasting yarn knitted on round 47: pick up 11 stitches at the bottom of the yarn and 11 stitches above. Remove the contrasting thread, which has become unnecessary.

R1 and 2 : \*kS\*

R3 : kS2, kC1, (kS3, kC1)x3, kS3.

R4 and 5 : \*kS\*

R6 : (kC1, kS3)x5, kC1, kS1.

R7, 8, 10 and 12 : \*kS\*

R9, 11 and 13 : \*pS\*




Bind off the 22 stitches by knitting.

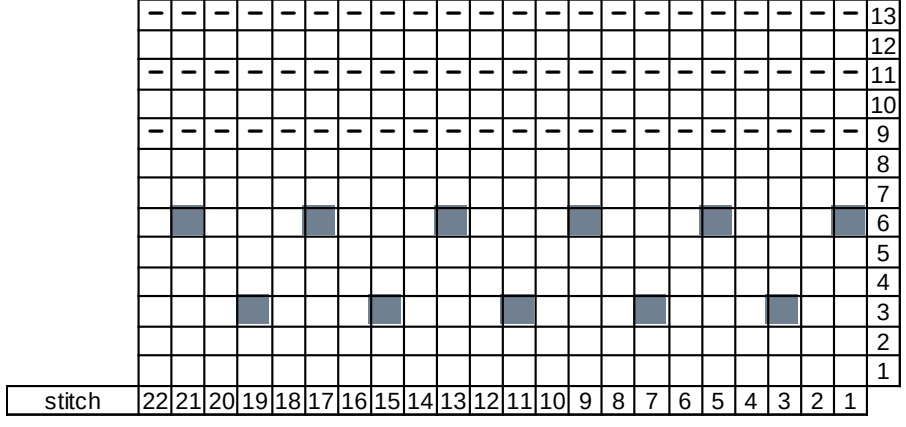
Bring in the threads, cut them short. For the thumb joint, it is possible that spaces appear, fill them when you enter your threads.

Proceed in the same way for the 2 mittens.

Thumb diagram

Caption

-  stitches with edition 3.0
-  stitches in life style solid
-  purl
-  knit




Fara beanie diagram

This diagram has to be repeated a total of 5 times, for the cast on of the stitches and the finishing of the beanie, refer to the written explanations.

Caption

 stitches with edition 3.0


 stitches in life style solid

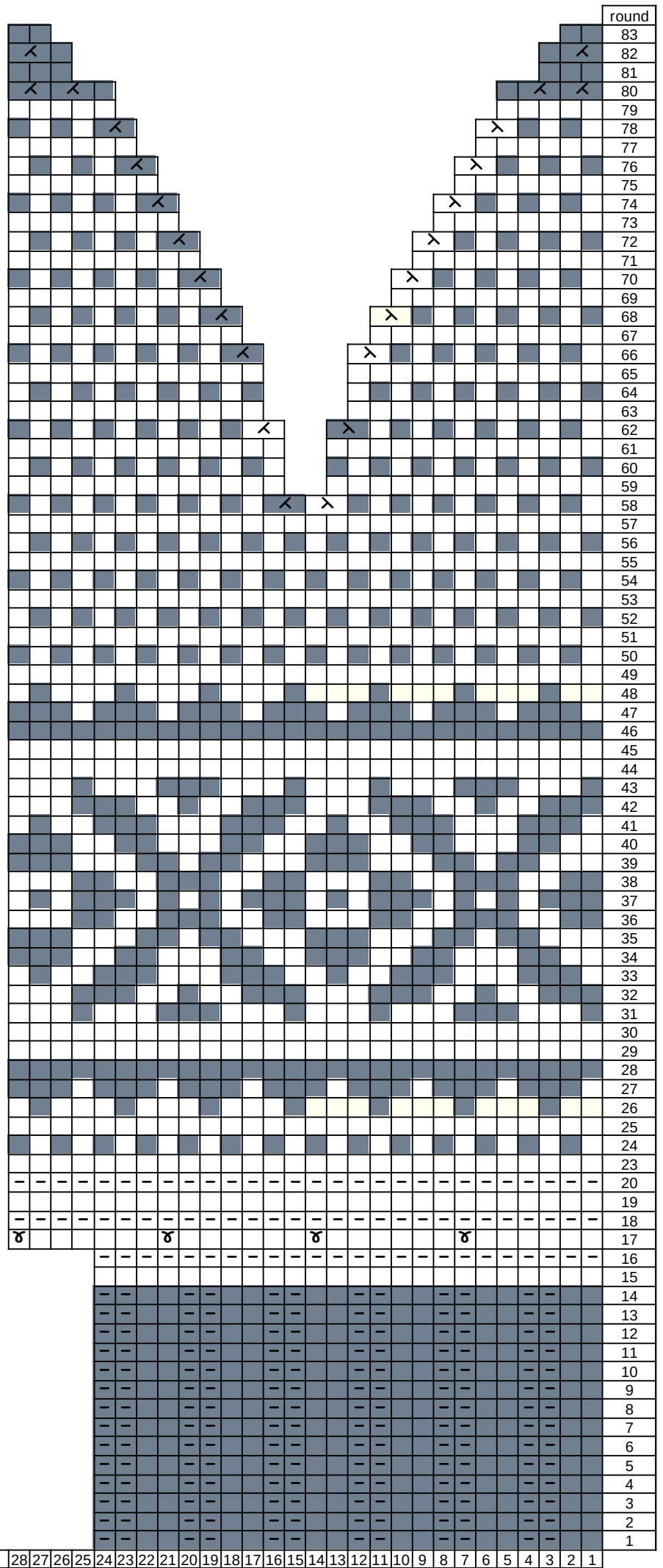
 purl

 knit

 Make 1

 SKP

 K2tog



Pattern Camille Delahaie- les  
aiguilles de camille.com  
Any commercial use of this  
pattern and its achievements  
are prohibited,  
unless prior written consent of  
the author.

